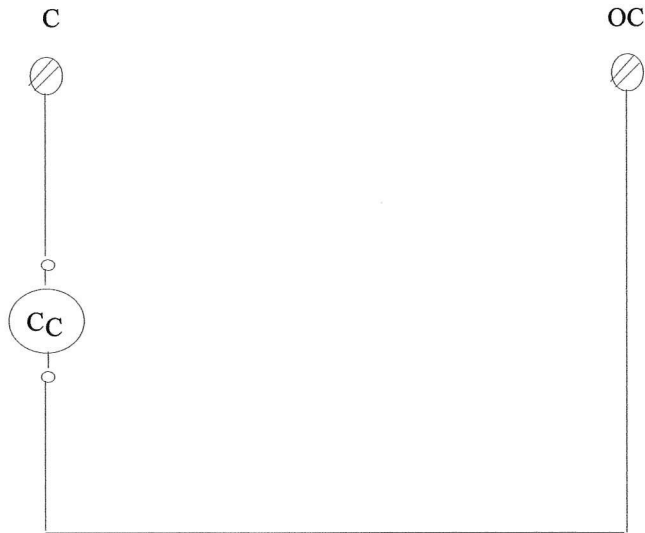
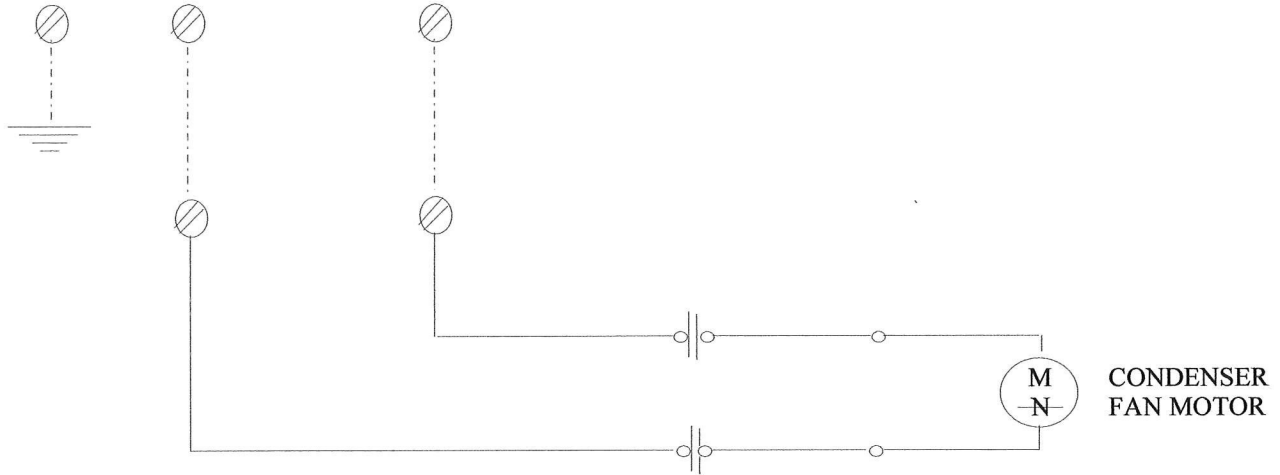


208 / 230 VOLT - 1 PHASE



NOTE 1: FIELD SUPPLIED DISCONNECT REQUIRED.

LEGEND

- M MOTOR
- Cc OUTDOOR FAN CONTACTOR COIL
- C OUTDOOR FAN CONTACTOR
- LOW VOLTAGE FACTORY WIRING
- HIGH VOLTAGE FIELD SUPPLIED
- ⊗ TERMINAL CONNECTION

Change Temp. Controller			Date
REVISIONS			01/04/10
DRY AIRE SYSTEMS			No. 1010
DRN: DWS	CKD: RJG	AP'VD: JDS	SCALE: NONE
Outdoor Condenser: OC-10 / 20			